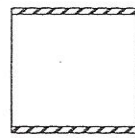


RECOMMENDED CABLE ASSEMBLY INSTRUCTIONS

FIGURE



HEAT SHRINKABLE TUBING



WASHER



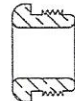
THICK INSULATOR



CAPTIVE CONTACT



FRONT INSULATOR



CLAMP NUT



WASHER



GASKET



BRAID CLAMP



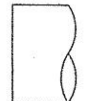
OR



DIELECTRIC BUSHING (WHEN SUPPLIED)



CONTACT



CONNECTOR BODY

*For cables RG-174, 188 and 316/U.

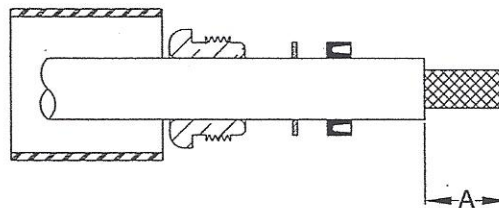
**For cables RG-62A and 71B/U only. When using this dielectric bushing, subtract 1/32" from dimension B and add 1/32" to dimension C.

TRIM DIMENSIONS

TRIM CODE	A	B	C
01	11/32	7/64	7/64
02	11/32	3/64	5/32
03	5/16	1/16	7/64
04	15/32	3/16	9/64
05	3/8	5/64	5/32
06	13/32	1/8	5/32
07	5/16	3/64	1/8
08	5/8	9/32	7/32
09	13/16	9/32	15/64
10	23/32	15/32	1/8
11	13/16	37/64	7/64
12	13/32	3/64	7/32
13	7/16	7/64	3/16
14	15/32	7/64	7/32
15	13/32	3/32	3/16
16	7/16	1/8	7/32
17	11/16	25/64	5/32
18	3/8	3/64	3/16
19	7/16	1/8	3/16
20	11/32	1/16	7/32
21	7/16	5/64	7/32
22	11/32	3/32	7/64
23	11/32	3/64	5/32
24	7/16	9/64	3/16
25	15/32	7/64	7/32

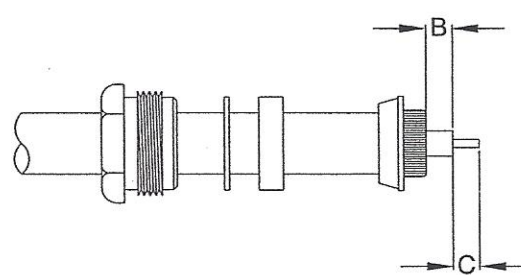
All dimensions in inches

STEP 1



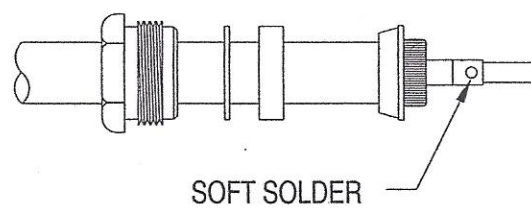
Slide heat shrinkable tubing (if supplied), clamp nut, washer and gasket onto cable as shown. Cut off jacket to dimension A as shown. Be sure v-groove faces away from nut as shown.

STEP 2



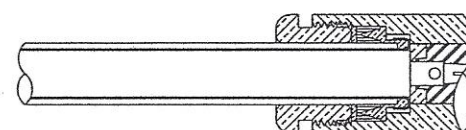
Comb out braid wires. Slide braid clamp over braid, being certain that clamp seats squarely against cut end of jacket. Form braid wires smoothly over clamp as shown and trim off excess braid wire. Cut dielectric to dimension B and conductor to dimension C as shown.

STEP 3



Place dielectric bushing (if required) over or into dielectric as necessary. Seat center contact firmly against cable dielectric and solder to cable conductor. Remove excess solder from outside of contact. For captive contacts, assemble washer and thicker insulator, then solder center contact to cable conductor. Then assemble other insulator with counter bore facing slotted or pointed end of contact.

STEP 4



Insert assembly into connector body, being certain that braid clamp is seated. Tighten clamp nut with a wrench.