



CROWN RF



Crown RF
2005A Industrial Blvd.
Rockwall, TX 75087

972-771-4711
972-771-9499 (fax)
800-225-3429 (toll free)

E-Mail: sales@crownerf.com

Website: www.crownerf.com

Solderless – EZ-Style

Crown P/N: CRN - 1692QC (PG - 1 / 2)

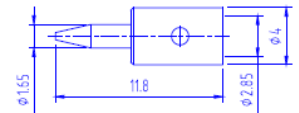
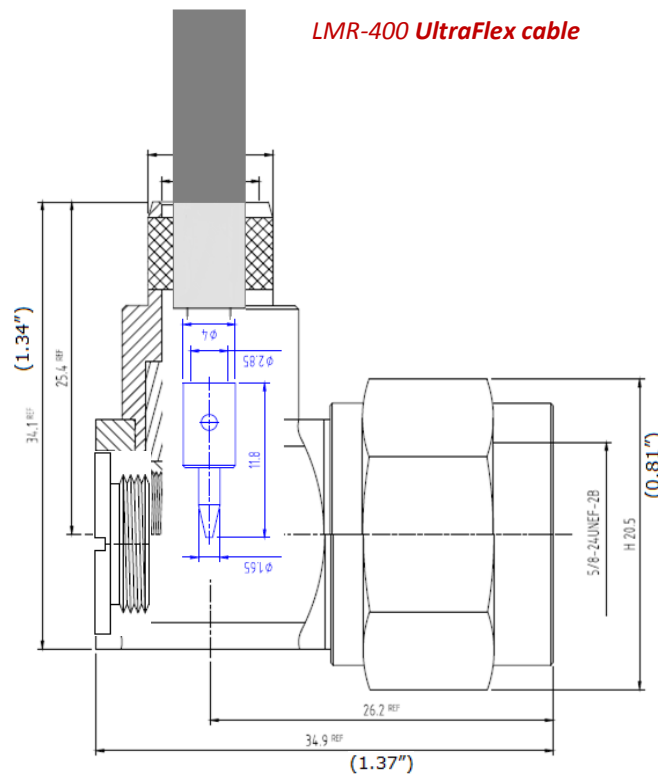
Description: N (Male) Hex Rt. Angle Crimp
LMR-400 (solid)
LMR-400 UltraFlex® (stranded)

Body: Nickel / Brass

Insulation: Teflon

Contact: Gold / BeCu

- Solderless/EZ-Style
- Use with Solid or Stranded center conductor
- Saves \$ on assembly time
- Innovative design for LMR400—UltraFlex®



**Center conductor pin
for LMR-400 (UF)
(solder or use .128 die)**



CROWN RF



CRN - 1692QC (PG - 2 / 2)

Description:

EZ - N (Male) Hex Rt. Angle Crimp

LMR-400 (solid)

LMR-400 UltraFlex ® (stranded)

Body:

Nickel / Brass

Insulation:

Teflon

Contact:

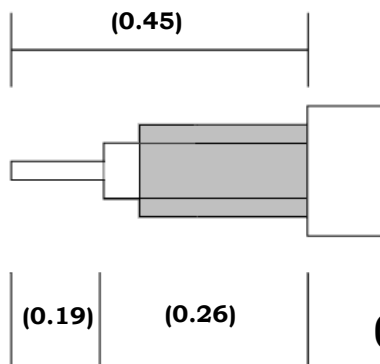
Gold / Brass

Views:



Assembly Instructions:

(1) Strip Cable per dimensions



(2) Crimp pin using .128 die



(3) Insert into main connector until pin is firmly seated

(4) Crimp sleeve (.429) and apply heat-shrink

**** Approx. Dimensions**

